



survitec

# 470 GPM INFLATABLE BOAT

ExoKeel technology compatible



**Versatile, stable, highly manoeuvrable, and designed for conducting multiple operations.** The 470 GPM features an inflatable deep V-shaped keel and hull shaping for offshore and inshore use. Suitable for insertion/extraction, raiding and search and rescue.

## BENEFITS:

- ✓ Design and construction benchmarked against SOLAS rescue boat standards
- ✓ Outstanding stability and manoeuvrability
- ✓ ExoKeel reinforces the boat profile, improving the ride performance in heavy sea states efficiently delivering the team safely to their target, ready for their mission
- ✓ Customizable accessories such as single point inflation, rapid deploy tow, cargo net
- ✓ Available in 3 different floor options
- ✓ Lightweight design, optimized for carrying with several handles



“ **Lightweight, superior build  
with intelligent inflation system** ”

WE EXIST TO  
PROTECT LIVES.

# 470 GPM INFLATABLE BOAT

## TECHNICAL DATA

### 470 GPM INFLATABLE BOAT

Length overall	4,700 m
Width overall	1,955 m
Length inside	3,400 m
Width inside	0,915 m
Weight hull	81 kg
Buoyancy chambers (Stk)	5
Max. Payload	1420 kg
Crew limit (Stk)	10
Max. Motorization	44 Kw      60 ps
Max. Weight motorization (single or twin)	140 kg
Single Point Inflation System	Single or twin cylinder inflated in less than a minute
Rapid deployable tow	Fixed tow system fitted to craft for fast recovery
Buoyancy	1,98 m <sup>2</sup>
Boat inner surface	2,93 m <sup>2</sup>
Tube diameter	52 cm
Tube diameter bug	47 cm
Fabric	Hypalon 1670 dtex

## BOAT SIZE RANGE

### BOATS AVAILABLE IN THE FOLLOWING SIZES:

	380GPM	420GPM	470GPM	530GPM	580GPM
Length	3,800 m	4,200 m	4,700 m	5,300 m	5,800 m
Width	1,670 m	1,800 m	1,955 m	2,135 m	2,500 m

### EXO KEEL AVAILABLE

Increases ride comfort to passengers for insertion, load carriage and gives added protection to a potentially vulnerable and essential component of the boat

### STV Valve

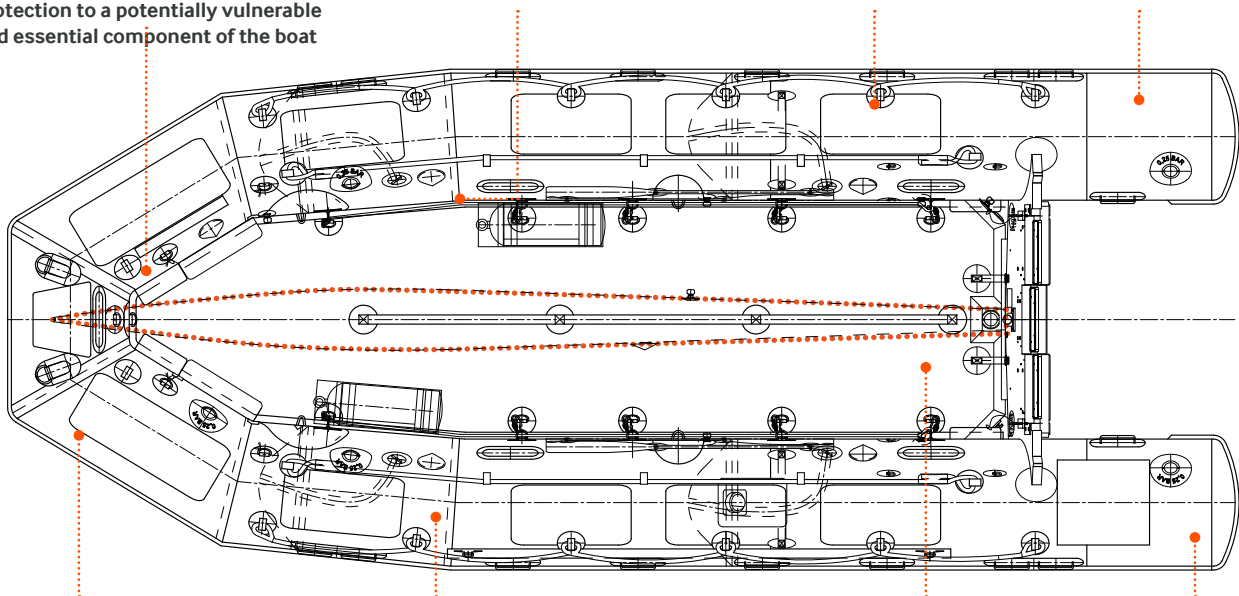
Switchable transfer valves, for use with rapid inflation and deflation for subsurface caching

### Single Point Inflation

Single/Twin depending on task. Can inflate 5.3 M boat in 1 minute

### Single/Twin Soft Handles

Rounded for better grip and push flat to the buoyancy to avoid snagging hazard



### Military C7 Inflation Valve

Flush to the buoyancy and interchangeable with a simple socket tool, no need to cut out and replace damaged valves, unique to Survitec

### Grip Patches

To assist personnel with raiding, boarding and secure seating of pax

### Multiple Floor Options

As per customer requirements

### Military C7 Inflation Valves

Positioned to minimise residual air during recovery of sub-surface assets